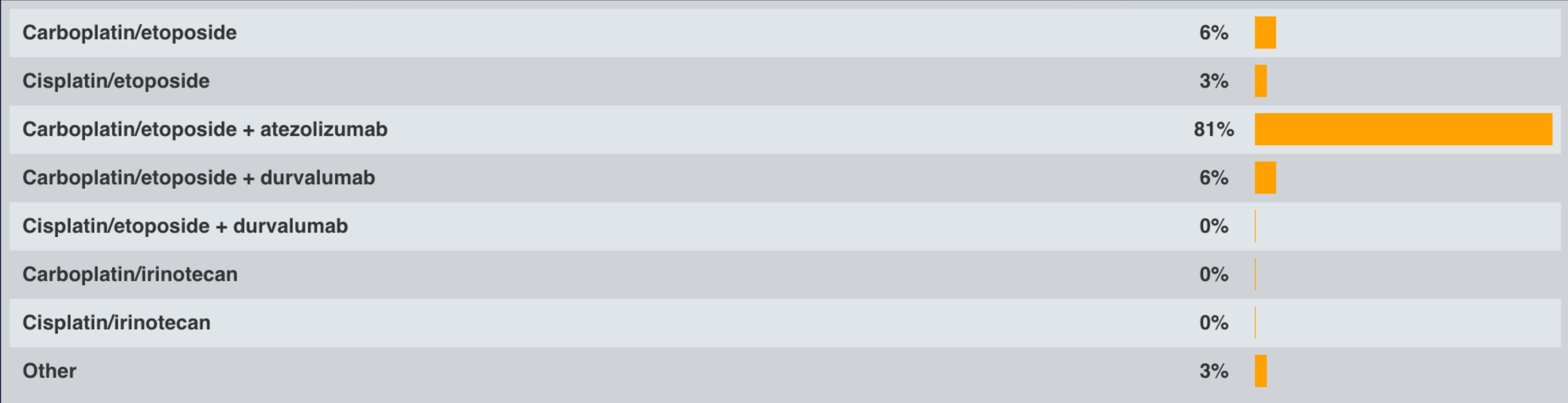
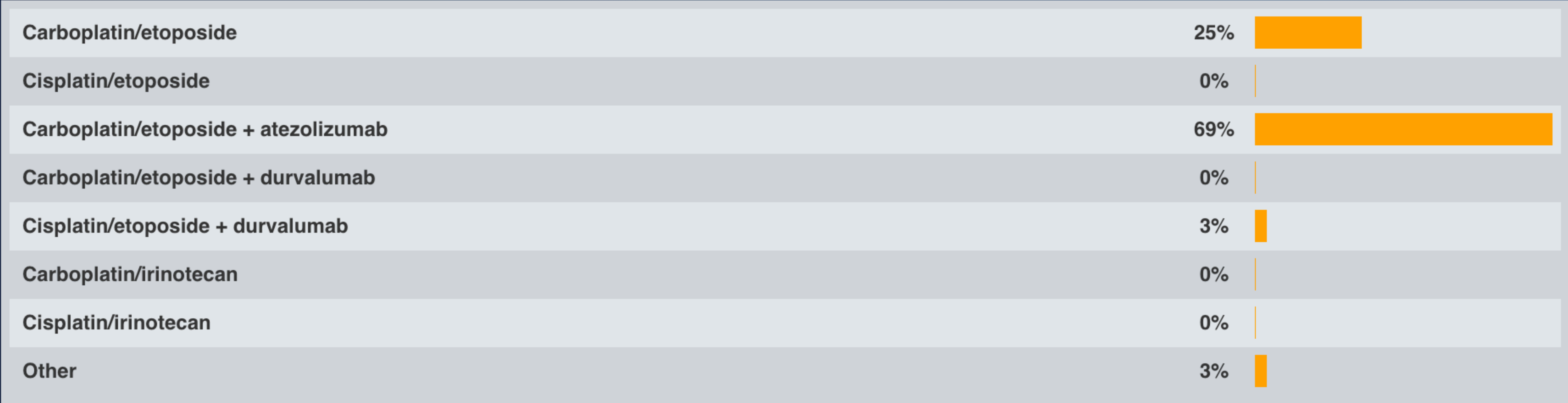


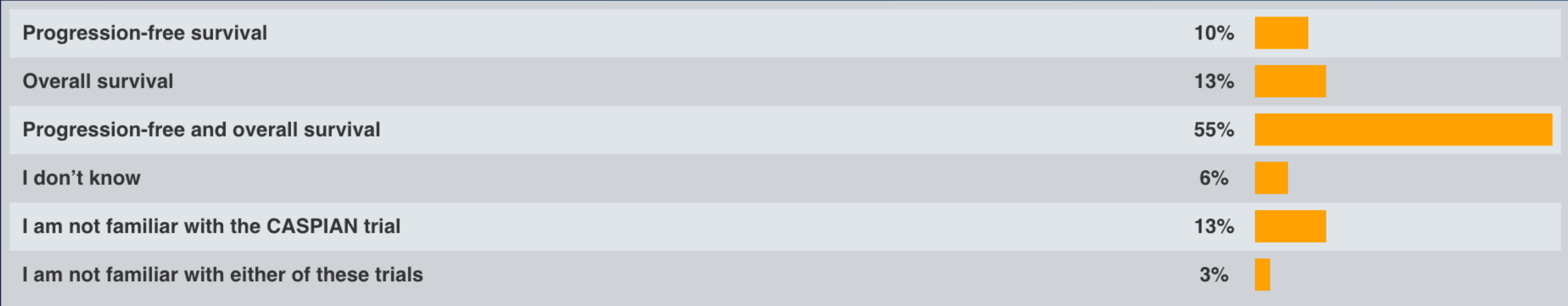
**Regulatory and reimbursement issues aside, what would be your preferred first-line treatment regimen for a 65-year-old patient with extensive-stage small cell lung cancer (SCLC)?**



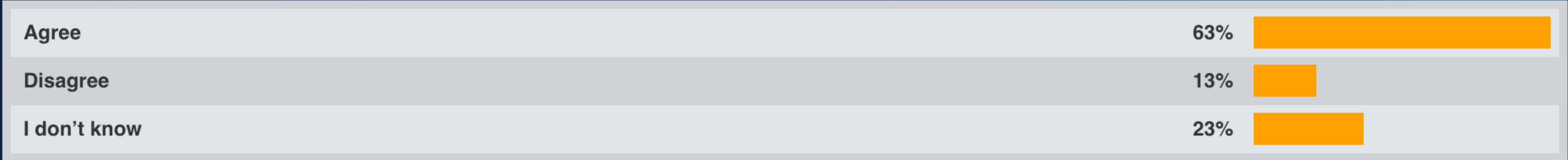
**Regulatory and reimbursement issues aside, what would be your preferred first-line treatment regimen for an 80-year-old patient with extensive-stage SCLC?**



**Both the IMpower133 and the CASPIAN Phase III trials demonstrated an improvement in \_\_\_\_\_ with the combination of an anti-PD-L1 antibody and chemotherapy as first-line therapy for extensive-stage SCLC.**



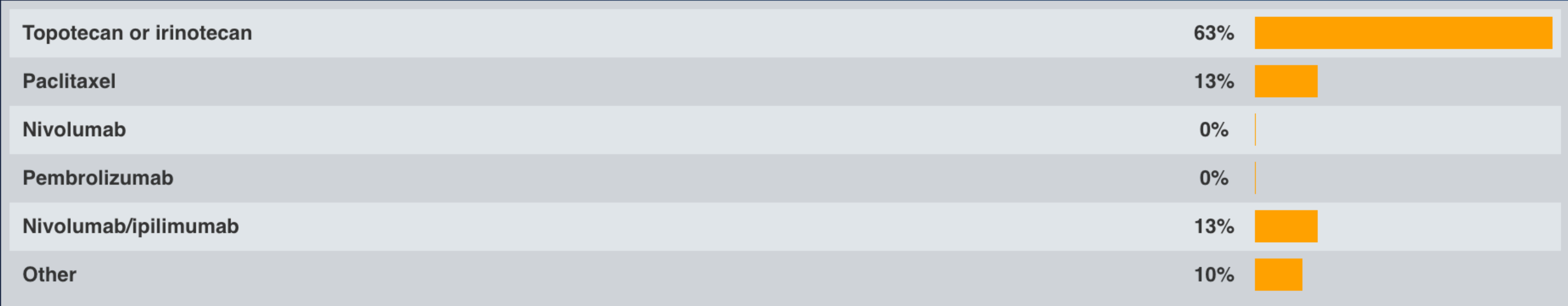
**The benefits and risks of adding durvalumab to platinum/etoposide and of adding atezolizumab to carboplatin/etoposide are very similar, and from a clinical point of view selecting between the 2 regimens can be considered a “coin flip.”**



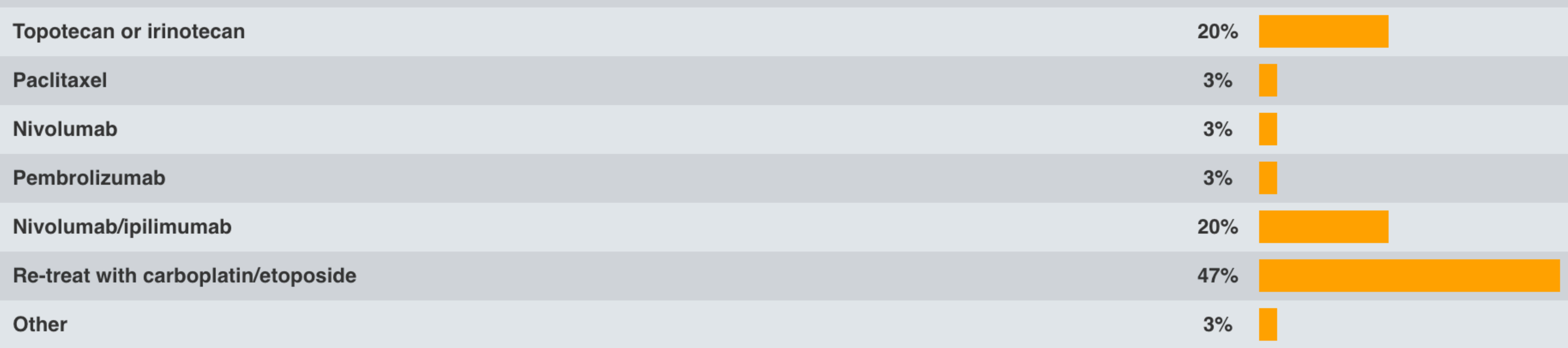
**Which of the following platinum agents offers the greatest therapeutic index when administered as part of a chemotherapy regimen for a younger patient with extensive-stage SCLC?**



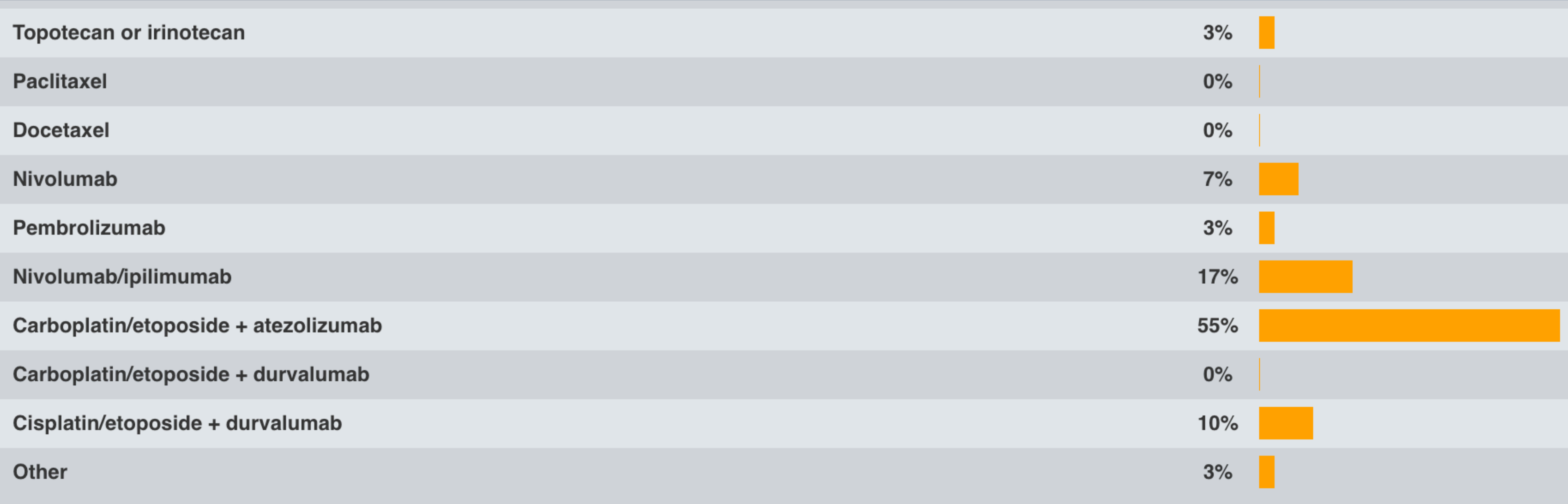
**A 65-year-old patient with metastatic SCLC experiences a response to first-line carboplatin/etoposide/atezolizumab but then experiences disease progression after 4 months. What would you generally recommend?**



**A 65-year-old patient with metastatic SCLC experiences a response to first-line carboplatin/etoposide/atezolizumab but then experiences disease progression after 6 months. What would you generally recommend?**

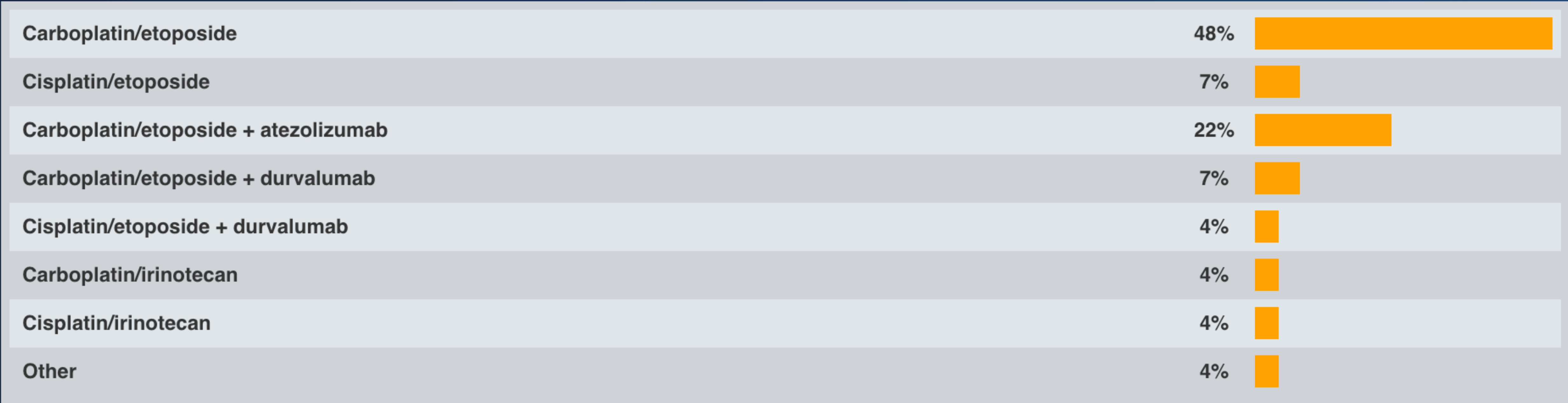


**A 65-year-old patient with limited-stage SCLC experiences a response to concurrent platinum/etoposide and RT but then experiences disease progression at 6 months. What would you generally recommend?**





**Regulatory and reimbursement issues aside, what would be your preferred first-line treatment regimen for a 65-year-old patient with extensive-stage SCLC and neurologic paraneoplastic syndrome causing moderate to severe proximal myopathy?**



**Regulatory and reimbursement issues aside, what would be your preferred first-line treatment regimen for a 65-year-old patient with extensive-stage SCLC and symptomatic SIADH (in addition to standard treatment for SIADH)?**

